



HEL

engineering services

Hold Engineering Ltd
Capability Overview

“

We have a proud track record of safely delivering fabrication, installation and site services to the Sellafield site.

”

Contents

About Us	3
Technical and Resources	4
Our Team	4
Surface Treatment	4
Quality Management	5
Health, Safety and Environmental Culture	5
Capability and Capacity	6
Collaboration	7
Collaborative Working	7
Socio-Economic	7
Commercial	8
Experience	8
Project Profiles	8

About Us

We are a structural and mechanical steelwork manufacture and installation specialist that can provide support from concept right through to implementation. In order to ensure that quality and accuracy is maintained throughout our projects, we have site engineering support for surveying and setting out. We also have the ability to support factory acceptance testing and commissioning for structural and mechanical equipment.

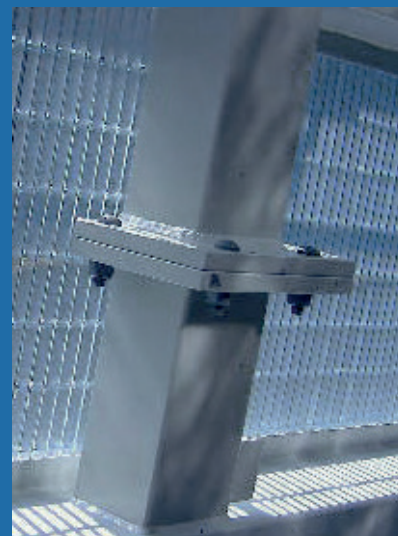
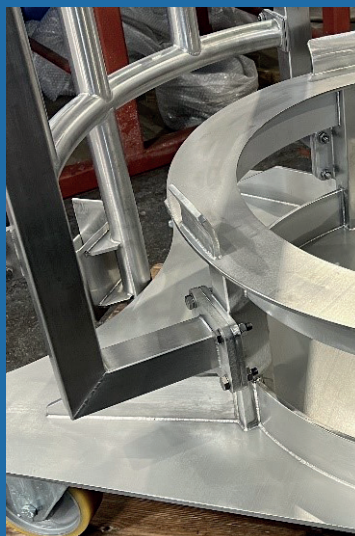
Subject to client requirements, we can work in compliance with quality grades 1, 2 and 3 for the nuclear industry and we employ SQEP personnel with extensive Sellafield site experience. We are experienced in the production of method statements, risk assessments and lift plans for installations within the nuclear industry. We boast a proven track record in the preparation of high-calibre quality plans and LTR documentation.

Based within a mile of the Sellafield site and possessing the flexible, responsive approach that is often unique to a local small or medium-sized enterprise (SME), we are ideally placed to safely and successfully deliver projects. Our estimating team utilise the tendering period to fully develop their strategy and demonstrate their depth of understanding of the technical and quality specifications. At Hold Engineering Ltd (HEL), we also show how our capabilities, capacity, knowledge and experience combine to present complete value-for-money offerings to our clients.

The Value of HEL

Delivering quality and safety

- ◆ Understanding of the key safety requirements
- ◆ Demonstration of capability and capacity
- ◆ Clear understanding of the work scope through a detailed delivery programme
- ◆ Robust and underpinned competitive price
- ◆ Commitment to working collaboratively with our clients



Steelwork fabrications that demonstrate the high-quality work we regularly produce

Technical and Resources

Our Team

Fabrication

Our manufacturing team possess a diverse set of fabrication skills and experience in areas including structural steel, high-pressure pipe spool manufacture, and workshop and site coded welding.

Installation

Our site erection team have carried out structural and mechanical installation works across all areas of the Sellafield site, in both clean and radiologically hazardous areas.

Site Engineering

We offer site engineering resources to accurately set out, line and level using total stations, digital levels and other precision measuring equipment.

Project Management

Our project management team drive our projects forward, ensuring tasks are completed in a safe and timely manner and the client's expectations are met.

Concept Proposals and Fabrication Drawings

We have an in-house AutoCAD technician that can convert the collected site data into concept proposals, fabrication drawings, lift plans and setting out data.

Assurance

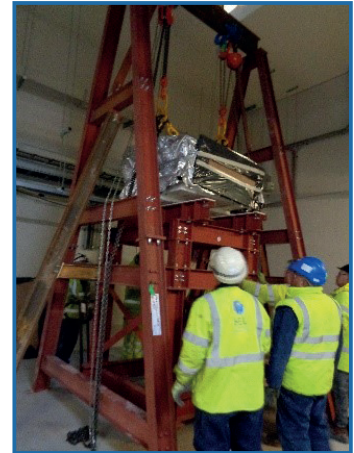
We have an experienced quality engineer compiling material certificates and procedures, dimensionally checking and testing in order to produce LTR packs, and ensuring product accuracy and conformity, as well as swift project closeout.

Estimating

Our estimating team work hard to capture all aspects of the scope and produce an accurate tender programme, proposal summary and price breakdown.

Surface Treatment

We have a close relationship with surface treatment specialists and can offer hot-dip galvanising to BS EN ISO 1461:2022 and colour paint systems, all to third-party approved procedures.



Quality Management

We are accredited to ISO 9001 and BS EN 1090 Execution Class 3 and understand the importance of providing all QA documentation concurrently with the manufactured items to quality grades 1, 2 and 3. Preparation and supply of documentation will be compiled during the project for traceability and quality assurance, which will include:

- LOC for traceability of bought-out items/off-the-shelf items
- Surface treatment COC
- Material certification
- LTR package incorporating weld procedures and qualification and weld inspection reports
- Inspection checklist

With our accrued experience of engineering complex equipment, we have honed our skills in the compilation of LTRs to a very high degree and these are collated concurrently during manufacturing/assembly and finalised within a very short period of time from the completion of the physical works. This ensures the prompt release of the equipment for delivery. Our procedures are all available to review at our office in Haile.

Health, Safety and Environmental Culture

Through many years of working on the Sellafield site, we have developed robust safe working practices and procedures both on site and at our fabrication facility. We pride ourselves that with the commitment of our staff we can offer the required assurance that all works will be completed in a safe and professional manner, with all phases being subject to risk-assessed processes and procedures undertaken by SQEP resources.

All our staff are empowered to raise constructive feedback, both good and bad, through our Assurance Observation (AO) report process, which is championed at the site through the site supervisor. These observations are logged, actioned and monitored and allow all staff to raise any concerns for the business to learn from experience (LFE). Whilst observations will, where appropriate, be promptly actioned by the supervisor, those which require escalation and further action will be monitored by the supervisor and discussed weekly with the team to ensure the profile and importance we place on safety remains high.

All our sites operate a 'perfect days' scheme to measure project and business performance on a daily basis. The perfect days running total is prominently displayed at our facility and, as we reach monthly, quarterly and beyond milestones of continuous perfect days, this is recognised and rewarded within the team. This has proved highly successful on other major projects within our group of companies and has improved safety performance and the overall safety culture, as well as the morale of the delivery teams.

In alignment with our Environmental Policy, we continually strive to reduce our impact on the environment, to protect our natural resources and to ensure that environmental considerations are paramount in all our actions.

Capability and Capacity

We have established a strong reputation for the successful delivery of fabrication, on-site installation and decommissioning services in the nuclear industry. With over 30 years' experience on the Sellafield site, we have detailed knowledge of operating within the controls and regulations of a nuclear licensed site. Our highly trained team are local to West Cumbria and have worked within our business for many years, bringing stability to the company and the services we offer. We have carried out works across all areas of Sellafield, in both clean and radiologically hazardous areas and within new build facilities, operational buildings and decommissioning areas, providing:

- Concept design for manufacture
- Steel fabrication
- Plant and equipment installation
- Steelwork refurbishment
- Structural and secondary steelwork fabrication and installation
- Decommissioning
- Steam pipe refurbishment and repair

Our current workforce comprises:

- 3 Platers/Fabricators (2 with P4 passes and SC clearance)
- 3 Welders (2 with P4 passes and SC clearance, 1 without site access)
- 2 Pipefitters (without site access)
- 2 Steel Erectors/Riggers (both with P4 Passes, 1 with SC and DV clearance)
- 1 Senior Project Engineer/Setting Out Engineer (with a P4 pass and SC clearance)
- 2 Project Engineers (without site access)
- 1 Project Manager (with a P4 pass)
- 1 Quality Engineer/Weld Inspector (with a P4 pass)
- 2 Supervisors (with P4 passes and SC clearance)

NIS Group of Companies

We are part of the NIS Group of Companies, a trio of businesses based in the North West of England. Through the group, we can offer a large suite of services, including:

- | | |
|------------------------------------|--|
| • Strategy and planning | • Project build and integration |
| • Mechanical and electrical design | • Waste management and decommissioning |
| • Stainless steel manufacture | • RPA and health physics |

As a member of the group, we are in the enviable position of being able to second SQEP resources from our sister companies to supplement our own resources if and when required.



Collaboration

Collaborative Working

We are committed to working collaboratively throughout all stages of the project, with our client and suppliers alike. Our culture is one of openness and honesty as we strive for continual improvement. We support each other and our stakeholders to engender a culture of trust and respect. Our company values are:

- Supportive
- Open
- Accountable
- Positive

Socio-Economic

Our aim is to be the employer of choice within our community. To do this, we recognise all our employees as individuals, treat them with respect and ensure they have a safe and rewarding working environment. We provide competent management, whose actions are just, ethical and supportive of employees' family obligations, and promote a workplace where achievements are recognised and rewarded, and communications are inclusive.

The majority of our employees have worked for the company for many years and are local to the West Cumbria area. We support our local community through sponsorship and volunteering, and also encourage our employees to consider the needs of others and support local causes in their spare time. Where appropriate, we also use local suppliers to support wider employment in the area and generate further spend in the local economy.

In order for our industry to thrive, it must be supported by suitably qualified and experienced individuals whose knowledge of technologies is continually refreshed. We actively encourage membership of professional institutions, foster and share innovation, and support relevant skills development programmes that are critical to the long-term sustainability of the nuclear industry.

Commercial

Experience

Drawing on our experience gained from working on a controlled and regulated nuclear site, we produce accurate programmes that capture all document preparation and approval that will be required prior to starting fabrication. Considerable time and effort is invested in planning the process so all stakeholders have confidence in the proposed programme. Throughout the lifecycle of the project, the programme is managed and monitored by our General Manager, Dave Pattinson, who has over 30 years' experience of delivering engineering projects on the Sellafield site.

Project Profiles

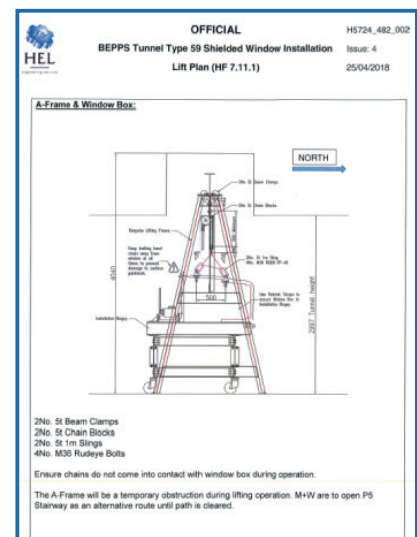
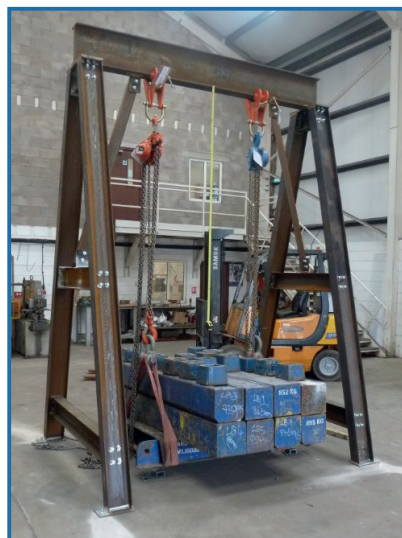
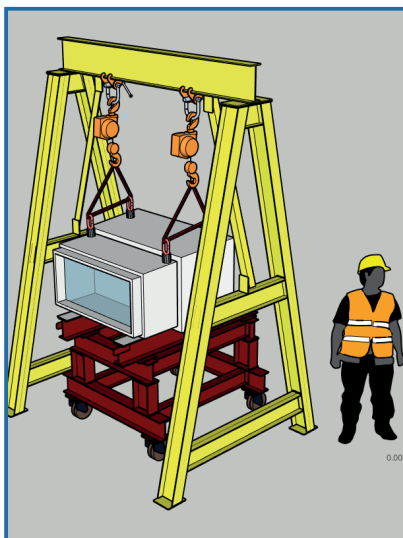
In recent years, we have been involved in the installation works on the Box Encapsulation Plant Product Store Direct Import Facility (BEPPS DIF) site at Sellafield, delivering over £1.5 million of work to date. Below is a selection of recent projects we have delivered.

Project: Installation of Six Type 59 and 60 Through Wall Shield Windows

Value: £300k

Duration: 39 working weeks

- We were contracted to produce an installation method and manufacture equipment for the installation of the 4,860kg shielding windows.
- We devised a bespoke lifting A-frame and installation bogie. Calculations were produced to substantiate the design.
- Below centre is an image of the A-frame being proof load tested.
- The A-frame lifted the window box from the crate and landed on an installation bogey to wheel the window box to the corresponding liner.
- The window box was then carefully inserted into the liner using horizontal toe jacks.
- The installations were done within a tented area to reduce dust contamination.

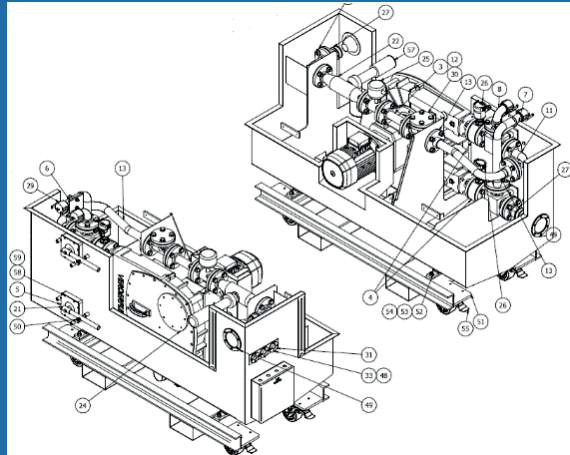
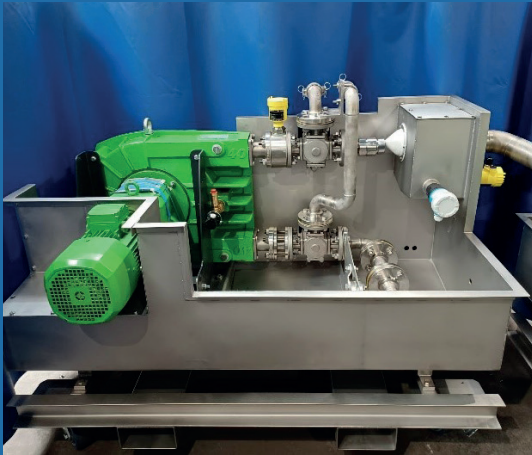


Project: Pump Skids and Transport Frames

Value: £136k

Duration: 52 working weeks

- ◆ We were contracted to manufacture two bulk waste retrieval skids by Magnox Ltd for their Hinkley Point A site.
- ◆ The manufacture included the fabrication of a fully welded stainless steel watertight shell. The base of the skids were made up of machined shafts and wheels, and internally the skids were fitted with pipework, pumps and valves.



Project: Manufacture of CB Shielded Pallets

Value: £191k

Duration: 16 working weeks

- ◆ Since 2021, we have manufactured and load tested 25 CB shielded pallets for various Magnox sites around the UK. The latest batch of four CB shielded pallets for the Winfrith site were completed in February 2023.
- ◆ The pallets are manufactured from heavy steel plate and square hollow section. Each pallet weighs nearly six tonnes when complete and is load tested to 48 tonnes.

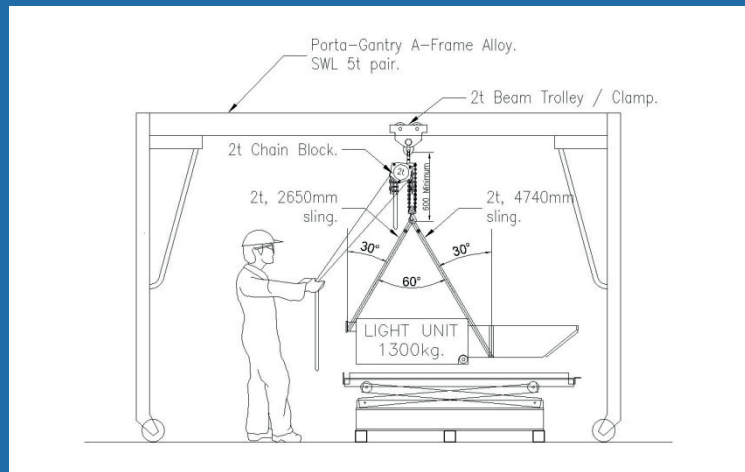


Project: Installation of 14 Through Wall Luminaries

Value: £120k

Duration: 24 working weeks

- ◆ We were contracted to produce an installation method and fabricate equipment for the installation of 14 1,300kg lighting units throughout BEPPS DIF.
- ◆ Each light unit was lifted on to a scissor lift platform and raised to height for installation.

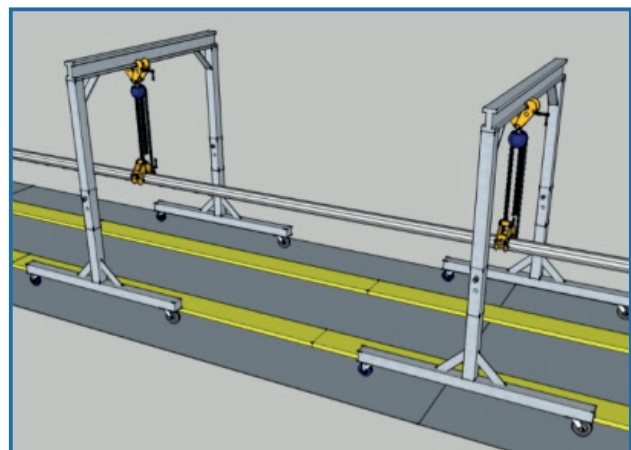


Project: Installation of the 360 System Rail and Transportation Bogie

Value: £435k

Duration: 36 working weeks

- ◆ Almost 200m of rail was installed within the BEPPS Transfer Tunnel, including soleplates, end stops, buzz bars, bogie and all associated items required to make the area operational.
- ◆ Site works included setting out with laser measuring devices, concrete drilling, lifting and installation of heavy equipment and rail welding.

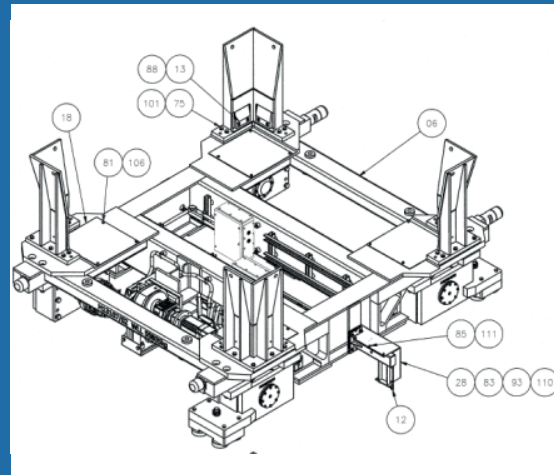


Project: Installation of the 131 System Rail and Transportation Bogie

Value: £260k

Duration: 23 working weeks

- ◆ Over 40m of rail was installed.
- ◆ Drilling templates were used to accelerate the anchor drilling process.
- ◆ We managed a rail welding specialist who performed the aluminothermic welding of A100 1080 Cr-V rail.

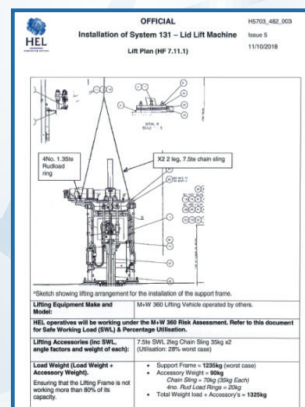


Project: Installation of the System 131 Lid Lift Machine

Value: £110k

Duration: 21 working weeks

- ◆ The equipment was pre-assembled and lifted on to the lid lift cell and aligned with the liner to ensure the grapple interfaced perfectly with flask lids in the cell below.
- ◆ On completion of setting out, the equipment was dowelled and welded to the encast plates.
- ◆ Provision of mechanical installation and commissioning resource.





HEL

engineering services

Hold Engineering Ltd

Unit 29
The Energy Coast Business Park
Haile
Cumbria
CA22 2NH

01946 727325

www.holdltd.com